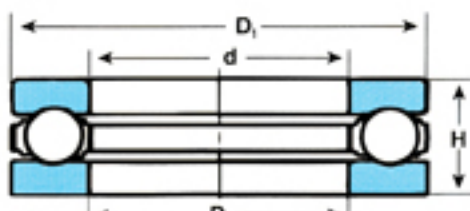


SINGLE DIRECTION THRUST BALL BEARINGS

METRIC SERIES 2900, 900,
INCH SERIES 0-



2900, 900 series



0 series

METRIC SERIES

SST Bearing No.	Bore				Outer Diameter		Width		Basic Load Rating lbs.		Weight lbs.
	d		d ₂		D		H		Dynamic C _a	Static C _{0a}	
	mm	in.	mm	in.	mm	in.	mm	in.			
2900	10	.3937	10.2	.402	26	1.0236	12	.4724	3617	5822	.073
2901	12	.4724	12.2	.480	28	1.1024	12	.4724	3860	6450	.082
2902	15	.5906	15.2	.598	31	1.2205	12	.4724	4197	7749	.090
2903	18	.7087	18.2	.717	35	1.3780	12	.4724	4235	8419	.099
2904	20	.7874	20.2	.795	37	1.4567	12	.4724	4347	9047	.121
2904-1/2	22	.8661	22.2	.874	42	1.6535	14	.5512	5584	11812	.185
2905	25	.9843	25.2	.992	45	1.7717	14	.5512	5659	12566	.207
2906	30	1.1811	30.2	1.189	50	1.9685	14	.5512	5921	14241	.238
2907	35	1.3780	35.2	1.386	55	2.1654	16	.6299	8769	21152	.304
2908	40	1.5748	40.2	1.583	60	2.3622	16	.6299	9182	23666	.340
2909	45	1.7717	45.2	1.780	68	2.6772	16	.6299	9519	26388	.441
2910	50	1.9685	50.2	1.976	74	2.9134	18	.7087	11243	31834	.567
2911	55	2.1654	55.2	2.173	78	3.0709	18	.7087	11805	35185	.582
2912	60	2.3622	60.2	2.370	82	3.2283	18	.7087	11805	36651	.595
2913	65	2.5591	65.2	2.567	90	3.5433	20	.7874	12180	39792	.820
2914	70	2.7559	70.2	2.764	95	3.7402	20	.7894	12742	43143	.873
2915	75	2.9528	75.2	2.961	100	3.9370	20	.7874	13117	46494	.926
900	10	.3937	10.2	.402	25	.9843	12	.4724	3727	5822	.066
902	15	.5906	15.2	.598	35	1.3780	14	.5512	6071	10681	.146
904	20	.7874	20.2	.795	40	1.5748	14	.5512	6558	12775	.174
905	25	.9843	25.2	.992	48	1.8898	15.5	.6102	8057	17173	.271
906	30	1.1811	30.2	1.189	53	2.0866	15.5	.6102	8544	19686	.306
907	35	1.3780	35.2	1.386	62	2.4409	18	.7087	11430	26598	.498
908	40	1.5748	40.2	1.583	64	2.5197	18	.7087	10643	27017	.476
909	45	1.7717	45.2	1.780	73	2.8740	22	.8661	14616	37907	.787
910	50	1.9685	50.2	1.976	78	3.0709	22	.8661	16677	43981	.833
911	55	2.1654	55.2	2.173	88	3.4646	24.5	.9646	21748	54034	1.220
912	60	2.3622	60.2	2.370	90	3.5433	24.5	.9646	17052	49007	1.170
913	65	2.5591	65.2	2.567	100	3.9370	27	1.0630	21924	64087	1.650

INCH SERIES

SST Bearing No.	Bore d		Outer Diameter D, D ₁				Width H		Basic Load Rating lbs.		Weight lbs.
	fraction	in.	fraction	in.	fraction	in.	fraction	in.	Dynamic C _a	Static C _{0a}	
0-4	1/2	.5000	1-9/32	1.2813	1-1/4	1.2500	5/8	.6250	4872	8461	.139
0-5	5/8	.6250	1-13/32	1.4063	1-3/8	1.3750	5/8	.6250	5059	9298	.161
0-6	3/4	.7500	1-17/32	1.5313	1-1/2	1.5000	5/8	.6250	6258	11770	.179
0-7	7/8	.8750	1-21/32	1.6563	1-5/8	1.6250	5/8	.6250	5584	11612	.198
0-8	1	1.0000	1-25/32	1.7813	1-3/4	1.7500	5/8	.6250	7795	16917	.221
0-9	1-1/8	1.1250	1-29/32	1.9063	1-7/8	1.8750	5/8	.6250	5996	14241	.240
0-10	1-1/4	1.2500	2-3/32	2.0937	2-1/16	2.0625	23/32	.7187	8170	18430	.329
0-11	1-3/8	1.3750	2-7/32	2.2187	2-3/16	2.1875	23/32	.7187	8769	21152	.355
0-12	1-1/2	1.5000	2-11/32	2.3437	2-5/16	2.3125	23/32	.7187	8919	22409	.379
0-13	1-5/8	1.6250	2-15/32	2.4687	2-7/16	2.4375	23/32	.7187	9069	23666	.404
0-14	1-3/4	1.7500	2-11/16	2.6875	2-21/32	2.6563	3/4	.7500	9519	26388	.509
0-15	1-7/8	1.8750	2-13/16	2.8125	2-25/32	2.7813	3/4	.7500	11055	30368	.538
0-16	2	2.0000	2-31/32	2.9687	2-15/16	2.9375	3/4	.7500	11243	31834	.591
0-17	2-1/8	2.1250	3-7/32	3.2187	3-3/16	3.1875	7/8	.8750	10231	31624	.838
0-18	2-1/4	2.2500	3-11/32	3.3437	3-5/16	3.3125	7/8	.8750	11805	36651	.882
0-19	2-3/8	2.3750	3-19/32	3.5937	3-9/16	3.5625	1	1.0000	16490	46494	1.200
0-20	2-1/2	2.5000	3-23/32	3.7187	3-11/16	3.6875	1	1.0000	12180	39792	1.250